

The 2016 Invitational Mills Trophy Race

June 10-11, 2016

Organized under the Authority of the Toledo Yacht Club, Storm Trysail Club
and the Mills Trophy Race Committee
Toledo, Ohio, USA

SAILING INSTRUCTIONS

1 RULES

- 1.1 The regatta will be governed by the rules as defined in *The Racing Rules of Sailing 2013-2016, Notice of Race, Class Rules on file with Race Committee and these Sailing Instructions*.
- 1.2.1 Each individual competitor may, with the agreement of the Mills Race Committee, display Advertising on clothing and personal equipment without restriction.
- 1.2.2 Advertising chosen and provided by the Mills Race Committee may be displayed on hulls, spars and sails without restriction except on the spaces reserved for identification by Appendix J of the Racing Rules and under Regulations 20.5 & 20.9.
- 1.3 Each yacht must conform to the current US Sailing's US Safety Equipment Requirements (USSER, effective 1/1/2016 amended for the Mills Trophy Race) governing minimum equipment and accommodations for US Coastal events which will apply.
- 1.4 Racing yachts shall carry corresponding numbers on mainsails, spinnakers, storm trysails and all overlapping headsails whose LP measurement exceed 130%.

2 NOTICES TO COMPETITORS

Notices to competitors will be posted on the official notice board located at the Toledo Yacht Club and also online at [2016 Mills Trophy Race Documents](#)

3 CHANGES TO SAILING INSTRUCTIONS

Any change to the Sailing Instructions will be posted on-line and at Toledo Yacht Club before 1200 on Friday, June 10, 2016.

4 SIGNALS MADE ASHORE

- 4.1 Signals made ashore will be displayed at the Toledo Yacht Club flagpole.
- 4.2 When flag AP is displayed ashore, '1 minute' is replaced with 'not less than 2 Hours' in the race signal AP. In the event of prolonged severe weather, the Race Committee may postpone the race start until the following morning. If such should occur, the Race Committee reserves the right to change the course for all entrants to the Alternate Course (see Sec 9.4). The Alternate Course and new start sequence schedule will be posted at Toledo Yacht Club and on-line at [Yacht Scoring](#) within one hour of the Race Committee's return to the dock at the Toledo Yacht Club.

In the event of complete cancellation of the race, festivities will continue as planned at Put-in-Bay.

5 SCHEDULE OF RACES

5.1	Date of racing:	Friday June 10, 2016	
	Harbor Gun:		1430
	Attention Signal	Several Short Blasts	1649
	Warning Flag	Class Flag 1 (Start 1) & Sound	10
	Preparatory	Preparatory Flag 1 & Sound	5
	One-minute	Drop Preparatory Flag+ 1 Long Sound	1
	Starting	Drop Class Flag 1 & Sound	0

The warning signal for each succeeding class shall be made with or after the starting signal of the preceding class. This changes RRS 26.

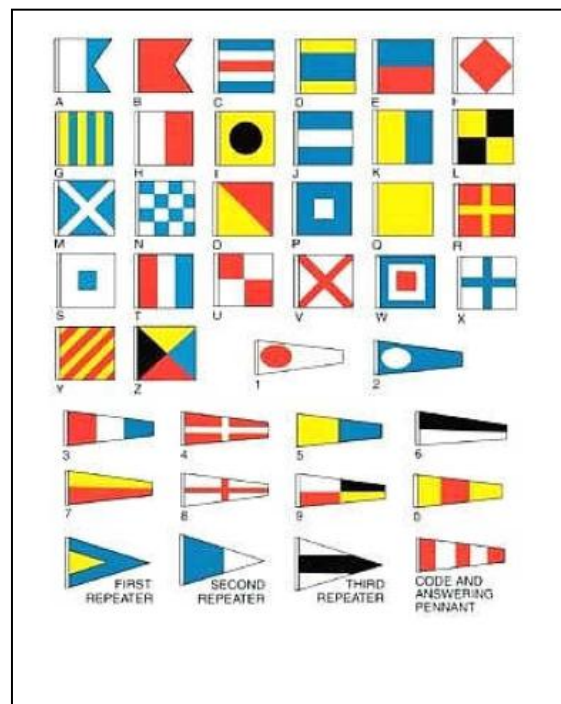
- 5.2 The scheduled time of the warning signal for the first race: 1650.
- 5.3 After a long postponement, to alert boats that a race or sequence of races will begin soon, an orange flag will be displayed (with one sound) for at least four minutes before a warning signal is displayed.

6 CLASS FLAGS and STARTS

- 6.1 Class Starts will be indicated by Code Flag:

Code Flags

<u>Start #/ Class</u>	<u>Flag</u>
1) PHRF C&D	#1
2) PHRF B	#2
3) PHRF A	#3
4) MULTI-HULL	#4
5) PHRF G & H	#5
6) PHRF E & F	#6
7) DOUBLE HANDED	#7
8) PHRF I & J	#8
9) CRUISING/CLASSICS	R
10) JIB&MAIN E	#0
11) JIB&MAIN D	D
12) JIB&MAIN C	E
13) JIB&MAIN B	F
14) JIB&MAIN A	G
15) Optional Start	K



6.2 Preliminary Starting Times

Mills Trophy Course(67.8 nm)

Start No.	Class	Class Flag	Warning Signal
1	PHRF C & D	#1	1650
2	PHRF B	#2	1700
3	PHRF A	#3	1710
4	MULTI-HULL	#4	1720

Governor's Cup Course (52.6 nm)

Start No.	Class	Class Flag	Warning Signal
5	PHRF G & H	#5	1730
6	PHRF E & F	#6	1740

President's Trophy Course (37.6 nm)

Start No.	Class	Class Flag	Warning Signal
7	DOUBLE-HANDED	#7	1750
8	PHRF I & J	#8	1800
9	CRUISING CLASS	R	1810
10	JIB & MAIN E	#0	1820
11	JIB & MAIN D	D	1830
12	JIB & MAIN C	E	1840
13	JIB & MAIN B	F	1850
14	JIB & MAIN A	G	1900
15	Optional CLASS	K	1910

Preliminary [Scratch Sheets](#) will be posted on the official Bulletin Board at TYC and on-line at [Yacht Scoring](#) no later than 1800 Thursday June 9, 2016.

7 RACING AREAS

- 7.1 Attachment C and Page 30 of the Race Program shows the location of racing areas.
- 7.2 Non-Electronic Required Charts are Numbers 14830, 14844

8 THE COURSES

- 8.1 The diagrams on page 30 of the Race Program show the courses, including the approximate angles between legs, the order in which marks are to be passed, and the side on which each mark is to be left.

The approximate course lengths will be:

Mills Trophy Course: 67.8 nm for Multi-hulls, PHRF (162 and below) and higher rated boats racing for the Mills Trophy.

Governor's Cup course: 52.6 nm optional course for PHRF (162 and below).

President's Trophy Course: 37.6 nm for all JAM classes, Double-handed, PHRF (165 and above), Cruising and Classics classes with 6 or more entries.

- 8.2 Courses will not be shortened. This changes rule 32.
- 8.3 Legs of the course will not be changed after the preparatory signal. This changes rule 33.

9 MARKS

9.1 Mills Trophy Course

From the Starting Line proceed in a northeasterly direction to the RACON buoy Fl G 5s "1E" at the base of the East Outer Channel, rounding it to starboard. Proceed in a southerly direction, rounding West Sister Island to port, then, keeping Niagara Reef buoy G "5" Fl G 4s to starboard and Scott Point Shoal buoy G "1" Fl G 4s to starboard, round the Sandusky Harbor (Moseley) Channel buoy R "2" Fl R 4s to port. Proceed north to Kelleys Island Shoal buoy G "1" Fl G 4s, leaving it to port. From there to Gull Island Shoal buoy R "4" Fl R 4s leaving it to starboard, then northwest to the BELL buoy G "1" Fl G 4s, east of Middle Bass Island, rounding it to port and to the Finish Line, keeping Ballast Island to port.

Total Course Length: 67.8 nm.

9.2 Governor's Cup Course:

From the Starting Line proceed in a northeasterly direction to the outer Toledo Channel buoy G "1" QG rounding it to starboard. Proceed in a southeasterly direction keeping Niagara Reef buoy G "5" Fl G 4s to starboard, round Catawba Island buoy G "1" Fl G 4s to port. Leave Mouse Island to starboard and round the Sandusky Harbor (Moseley) Channel buoy R "2" Fl R 4s to port. Proceed in a north-northwesterly direction to Kelleys Island and keep the R "2" Fl R 4s buoy to starboard, then to Ballast Island rounding it to port, to the Finish Line.

Total Course Length 52.6 nm

9.3 President's Trophy Course:

From the Starting Line proceed in a northeasterly direction to the outer Toledo Channel buoy G "1" QG, rounding it to starboard. Proceed in a southeasterly direction keeping Niagara Reef buoy G "5" Fl G 4s to starboard, round Catawba Island buoy G "1" Fl G 4s to port. Leave Mouse Island to Starboard, proceed northeasterly and leave Scotts Point Shoal buoy G "1" Fl G 4s to port, then to Ballast Island rounding it to port, to the Finish Line.

Total Course Length: 37.6 nm.

9.4 Alternate Course to Put-in-Bay

In the event of a postponement that results in the race starts being rescheduled to Saturday morning, the Alternate Course will be used to get the race entrants to Put-in-Bay. From the Starting Line proceed directly to the Finish Line, crossing from west to east, with your reflective numbers positioned aft of the mast on the starboard (shoreside) lifelines. Total Course Length 22.6 nm

10 THE START

10.1 Races will be started as indicated in Sailing Instruction 5.1 with the warning signal with class flag made 10 minutes before the starting signal.

10.2 The Starting Area will be approximately 1.7 nm SE (140 T degrees) of the Toledo Harbor Light (Approx 41° 44.3' N, 83° 18.1' W). The Starting Line Diagram is found on Page 30 of the Race Program.

The line itself shall be between an Orange Flag on the Race Committee Yacht (identified by a Yellow Flag with the black letters "RC") and the Orange Mark in the

water at the opposite end of the line (with or without a nearby Observer's Committee Yacht). If there is no Orange Mark on station, the Port End of the line will be the Toledo Harbor Light.

One or more Limit Marks (flag buoy with half red and half green horizontal bands) may be set near the starting line. If a yacht touches any limit mark, a starting line boat, or passes between a limit mark and a starting line boat, she shall have touched a starting mark.

- 10.3 Boats whose warning signal has not been made shall avoid the starting area during the starting sequence for other classes. All yachts sailing in this regatta may be subject to protest by the Race Committee for failing to stay clear of the indicated areas. See inset diagram on Race Program page 30.
- 10.4 A boat starting later than 30 minutes after her starting signal will be scored Did Not Start (DNS) without a hearing. This changes rules A4 and A5.

11 THE FINISH

- 11.1 The Finishing Marks will be an orange shape with a white strobe light on the water end approximately 600 ft. from the protection mark and the Lighted Flag Pole flying a Yellow pennant with Black "RC" letters and an Orange Flag located on South Bass Island. An orange shape with a strobe light will be placed as a protection marker indicating shallow water near the shore. The Finish Line Diagram is found on page 31 of the Race Program.

Due to the location of the finish line, yachts will not receive a gun or sound signal. If the Finish Line is to be unattended, the Race Committee will broadcast advance notification on VHF channel 71. In that case, it is the responsibility of the skipper to record and inform the Race Committee of its finishing time.

- 11.2 After Finishing, each yacht shall contact the Race Committee on VHF channel 71 and give:
1. Yacht Name
 2. Yacht ID #
 3. Yacht ahead (if known)
 4. Yacht astern (if known)

Yachts are requested to monitor VHF channel 71 until instructed to change to VHF Channel 78 for dockage or inspection instructions. **Do not break in on transmissions at the finish line.**

All boats must wait for the Mills Race Harbormaster's docking instructions before entering the Put-in-Bay Harbor.

11.3 Day Finish:

Leave mainsail up well beyond the finishing line so that sail numbers and yacht's class may be verified after each finish.

11.4 **Night Finish:**

Note: Reflective Boat ID#'s are required to be tightly displayed aft of the beam on the portside/shoreside lifelines prior to entering the finish area (day or night). If the numbers cannot be read, the Committee may not be able to establish a finish time for the competitor. Please leave mainsail and boat ID# showing well past the finish line. Keep reflective number for next year.

11.5 **General Finishing Requirements:**

- 11.5.1 Each yacht shall take its own time at the finishing line and record yacht time and day on the card provided. Also, each yacht shall indicate the sail number or name of other yachts ahead, astern and abeam on the same card.
- 11.5.2 It is required that the finish card with sail number and finish time be turned in at the Finish Card box at the island end of your dock by 0900 Saturday or within 1-1/2 hours after finishing, whichever is later. Failure to turn in finish card may subject yacht to disqualification.

12 **PENALTY SYSTEM**

- 12.1 The Scoring Penalty, rule 44.3, will apply. The penalty will be no less than 3 places at the discretion of the protest committee, in lieu of disqualification, but in no case should the end result be better than the fouled boat.
- 12.2 For the Multi Hulls class (only), rule 44.1 is changed so that the Two-Turns Penalty is replaced by a One-Turn Penalty.

13 **TIME LIMITS AND RECORDING MARKS**

- 13.1 There is no time limit.
- 13.2 **Recording Marks of the Course:**
Each yacht shall record the yacht ahead and behind when rounding or crossing:

Mills Trophy Course: Sandusky Harbor (Moseley) Channel buoy R"2" Fl R4s and at the Finish Line

Governor's Cup Course: Catawba Island Buoy G "1" Fl G4s and the Finish Line.

President's Trophy Course: Catawba Island Buoy G "1" Fl G4s and the Finish Line.

14 **PROTESTS AND REQUESTS FOR REDRESS**

- 14.1 Protest forms are available at the race office, located at Put-in-Bay Yacht Club. Protests and requests for redress or reopening shall be delivered there within the appropriate time limit. The protesting yacht shall define the dockage location of all yachts named in the protest. The Race Committee suggests that the protesting yacht request a receipt signed by the party accepting the protest form.
- 14.2 For each class, the protest time limit is 2 hours after finishing.
- 14.3 Notices will be posted no later than 30 minutes after the protest time limit to inform competitors of hearings in which they are parties or named as witnesses. Time and location of the hearing will be posted on the official Mills Race Bulletin Board at Put-in-Bay Yacht Club.

- 14.4 Notices of protests by the race committee or protest committee will be posted to inform boats under rule 61.1(b).
- 14.5 Breaches of instructions 10.3, 16, 17, 18, 19, and 20 will not be grounds for a protest by a boat. This changes rule 60.1(a). Penalties for these breaches may be less than disqualification if the protest committee so decides. The scoring abbreviation for a discretionary penalty imposed under this instruction will be DPI.
- 14.6 A request for redress based on a protest committee decision shall be delivered no later than 30 minutes after the decision was posted. This changes rule 62.2.

15 SCORING

- 15.1 The Low Point System of Appendix A will apply.
- 15.2 PHRF and JAM yachts will be calculated in accordance with the yacht's rating as approved by the Mills Rating Committee. Multi-Hull yachts will sail using the GLMRA rule.
- 15.3 All courses for the Mills Trophy Race will be scored Time on Distance. Time Allowances for yachts will be calculated in accordance with a yacht's rating and the rated distance.

16 SAFETY REGULATIONS

- 16.1 A boat shall have non-electronic charts required No. 14830 and 14844.
- 16.2 A boat that retires from a race shall notify the race committee as soon as possible by contacting them on VHF 71 or telephoning them at Put-in-Bay at (248) 224-7376 or (740) 304-8950. A yacht abandoning the race for any reason must break out and display her ensign and keep clear of yachts still racing.
- 16.3 Through a safety meeting with the crew, the skipper must assure himself that the crew knows where the safety equipment is kept and how to use it. The safety of a yacht and her crew is the sole and inescapable responsibility of the owner or skipper who must insure that the yacht is fully sound, thoroughly seaworthy and manned by an experienced crew who are physically fit. The skipper of the yacht must be satisfied as to the soundness of the hull, spars, rigging, sails and all gear. He must insure that all equipment is properly maintained and stowed.

17 REPLACEMENT OF CREW OR EQUIPMENT

Substitution of damaged or lost equipment will not be allowed unless authorized by the Race Committee. Requests for substitution shall be made to the committee at the first reasonable opportunity.

18 EQUIPMENT AND MEASUREMENT CHECKS

- 18.1 A boat or equipment may be inspected at any time for compliance with the class rules and sailing instructions. On the water, a boat can be instructed by a race committee equipment inspector or measurer to proceed immediately to a designated area for inspection.
- 18.2 Inspection of a yacht in no way limits or reduces the complete and unlimited responsibility of a yacht's skipper for the safety of a yacht or her crew. The Race Committee reserves the right to inspect entries for eligibility and equipment requirements at any time prior to the Awards. Yachts which fail to comply with these equipment and accommodation standards may be protested by the Committee. If such

a protest is sustained, the yacht may be disqualified or assessed an appropriate time penalty.

19 TRASH DISPOSAL

A competitor shall not intentionally put any trash in the water. See RRS 55.

20 DIVING EQUIPMENT AND PLASTIC POOLS

Underwater breathing apparatus and plastic pools or their equivalent shall not be used around keelboats between the preparatory signal of the first race and the end of the regatta.

21 RADIO COMMUNICATION

All competitors shall monitor VHF channel 71.

22 PRIZES

An Awards Ceremony will be held at the Put-in-Bay Yacht Club starting at 0930 Sunday June 12, 2016.

Prizes will be given as follows: Flags shall be awarded to the top three finishers in each class with six (6) or more entries, plus Overall Best Corrected and Elapsed Times for Mills PHRF, Governor's PHRF, President's PHRF, President's JAM.

Trophies shall be awarded to the best finisher in each class and division. In addition, Perpetual Trophies may include (but are not limited to) the Associated Yacht Club Trophy, Cleveland Press Cup, Commodore Clement O. Miniger Trophy, Monroe Yacht Club Cup, Toledo Yacht Club Time Prize Trophy, Commodore Frank Heck Trophy, Budweiser Eagle Trophy, Commodore Affleck Bowl, Commodore Johnston/Wood Trophy, Commodore Harry L. Wood Trophy, C&C Perpetual Trophy, W.C. Noack and Sons Trophy and the Old Sam Trophy.

Race trophies for each class winner and all other overall, area and special perpetual trophies will be awarded at a special trophy presentation to be held at the Toledo Yacht Club. The date will be the Wednesday preceding the next year's race.

23 DISCLAIMER OF LIABILITY

Competitors participate in the regatta entirely at their own risk. See rule 4, "Decision to Race". The organizing authority will not accept any liability for material damage or personal injury or death sustained in conjunction with or prior to, during, or after the regatta.

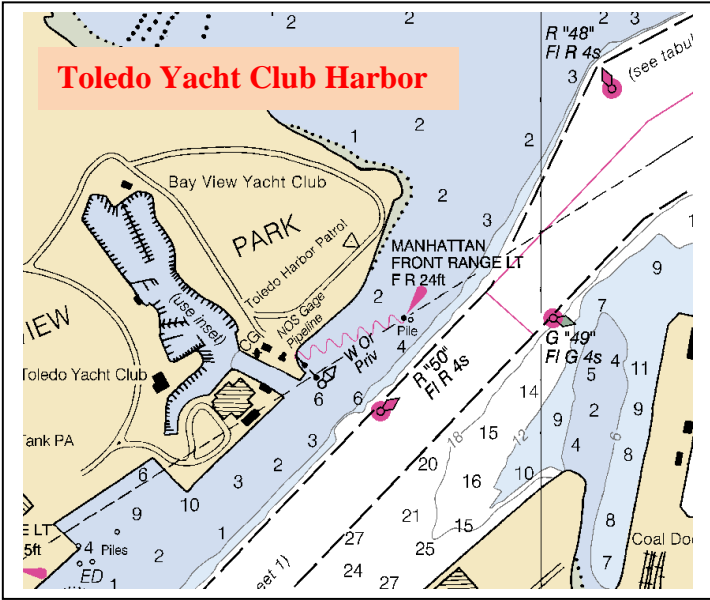
The Toledo Yacht Club, the Mills Trophy Race Committee, and cosponsoring clubs do not accept responsibility for loss of life or injury to participants or others or for the loss or damage to any vessel in any way or from any cause during or related to this race, cruise or related activities.

The skipper and/or owner of each yacht is responsible for the conduct of each member of the crew and is further responsible to making sure that only those of his crew who are of the legal drinking age receive the specified wrist bands.

24 INSURANCE

Each participating boat shall be insured with valid, third-party insurance sufficient to cover liability for loss, damage, personal injury, or death but not less than \$100,000 for each incidence and occurrence.

Attachments A,B,C



Mills Race Courses

Preliminary Starting Times

(See Official Bulletin Board at TYC)

Mills Trophy Course						One Design Trophy Course					
70.00 nm						30.50 nm					
1	Warning gun	1650	Yellow shape	PHRF C & D		15	Preparatory gun	1915	Blue shape	ONE DESIGN PHRF 184+	
	Preparatory gun	1655	Blue shape	Red shape			Starting gun	1920	Red shape		
2	Preparatory gun	1705	Blue shape	PHRF B		10	Preparatory gun	1915	Blue shape	CLASSICS	
	Starting gun	1710	Red shape				Starting gun	1920	Red shape		
3	Preparatory gun	1715	Blue shape	PHRF A & IRC A		Note:					
	Starting gun	1720	Red shape			(a) Any additional class starts will be noted on the bulletin board. The Race Committee may grant a separate start if indicated by a class having sufficient entrants.					
4	Preparatory gun	1725	Blue shape	MOZZI-HULL		(b) A member designating the start of each class will be displayed from the Race Committee board during the period prior to the start of that class. Class assignment included in the Skipper's Packet.					
	Starting gun	1730	Red shape								
Governor's Cup Course											
54.10 nm											
5	Preparatory gun	1735	Blue shape	PHRF C & R		Finish Line Diagram					
	Starting gun	1740	Red shape			WHITE STACKE LIGHTS					
6	Preparatory gun	1745	Blue shape	PHRF B & F		Note: The finishing line is between the outer white stacke light and the lighted flag pole lying due E.C. ground located on South Bass Island.					
	Starting gun	1750	Red shape			DOUBLE HANDED (D-1 & 2)					
President's Trophy Course											
38.06 nm											
7	Preparatory gun	1755	Blue shape	PHRF I & J		Note: Protection mark only!					
	Starting gun	1800	Red shape								
8	Preparatory gun	1805	Blue shape	PHRF I & J							
	Starting gun	1810	Red shape								
9	Preparatory gun	1815	Blue shape	PHRF C							
	Starting gun	1820	Red shape	CROSSING CLASS							
Put-in-Bay Harbor											
12											
	Preparatory gun	1845	Blue shape	JIB & MAIN C							
	Starting gun	1850	Red shape								
13	Preparatory gun	1855	Blue shape	JIB & MAIN R							
	Starting gun	1900	Red shape								
14	Preparatory gun	1905	Blue shape	JIB & MAIN A							
	Starting gun	1910	Red shape								

Package (will be assigned)

31

